

# VULCAN AGRI



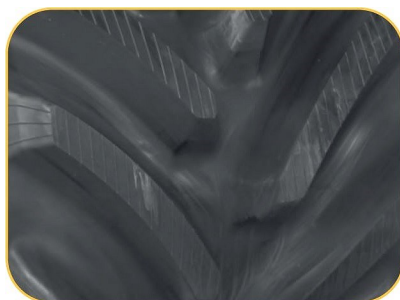
Rubber Track for

## John Deere 8RT

8295RT 8310RT 8320RT 8335RT 8345RT 8360RT 8370RT

# 30"6"60

Reference	Width	Lenght	Tread	Pitch	Tread height	Tread width	Guide lugs	Ply	Thickness
30"6"60	30"	360"	120	6"	2.6"	2"	60	5	1.5"
(30"X7,8"X46)	762mm	914cm	120	152mm	65mm	50mm	60	5	38mm



### ONE STEP VULCAN

**Vulcanisation in one step** of track core, guide lugs and tread patterns reinforce solidity and **prevent tread pull off**. All track parts are strongly vulcanised and bonded together. **Low wearability rubber compound** offers extended lifetime.



### STRONG CABLES

The track tensile strength is ensured by a full **layer of 5.4mm, seamless tension cables**. In addition, the track's core is reinforced with as much as **four steel cable layers** placed at special angles to maximise the core stiffness, making our tracks the **best choice for durability and flexibility**.



### ENGINEERED QUALITY

New **self-cleaning tread bars** improve traction whilst offering no vibrations. The tracks are designed to last and come with up to **2 years warranty** on Friction and Positive Drive Machines.

LEACH LEWIS RUBBER TRACKS LTD

UK: Units 4-5 Hikers Way, Crendon Industrial Park, Long Crendon HP18 9RW

FRANCE: 58 Avenue De Wagram | 75017 PARIS

Commercial contact : Tel : +33 4 92 34 49 76 Email : [rb@llrt.co.uk](mailto:rb@llrt.co.uk)

[www.llrt.co.uk](http://www.llrt.co.uk)

